



YAVNEEL
VACATION VILLAGE

Purchase A Vacation Property Up North

” שלום לך ארץ נהדרת...
מימיה הכחולים של הכנרת
והרקיע התואם מעל” - יהורם גאון



WHY UP NORTH?

Immerse yourself in the wonder of the Galilee
and capture the true meaning of "יונפש"
(vacation for the soul)



NOT JUST SERENITY

With attractions like Aquakef, Kinneret water sports, & meaningful experiences such as kivrei tzadikim, the Galilee is an all encompassing destination.



Why Yavneel?



REAL ESTATE VALUE

OUT IN THE COUNTRY, YET CLOSE TO EVERYTHING

CONNECTED TO THE PAST & AN EYE TO THE FUTURE

Aerial View Of Yavneel



REAL ESTATE VALUE

Since 2009, real estate has **tripled** in Yavneel. Get a beautiful home for at least 20% **LESS** than neighboring towns. You can enjoy this vacation home year round while earning a 5-7% net ROI.

A map of the Kinneret region in Israel, showing the Sea of Galilee and the Jordan River. The map includes several location pins and labels for towns and villages. A dark grey rectangular box is overlaid on the left side of the map, containing four lines of white text. The text lists travel times to various locations: 10 minutes to the Kinneret, 15 minutes to Tiveria, 20 minutes to the Golan, and 30 minutes to Arbel National Park. The map also shows roads with route numbers (785, 77, 7688, 90, 92, 98) and other geographical features like the Jordan River and the Sea of Galilee.

10 MIN TO THE KINNERET

15 MIN TO TIVERIA

20 MIN TO THE GOLAN

30 MIN TO ARBEL NATIONAL PARK

PROXIMITY



HISTORY

Yavneel was founded in 1901 by Zionist pioneers from Europe. The plot of the project itself actually belonged to one of Israel's heroes, and **אצ"ל** fighter, late Menachem Luntz. Many of these great pioneer's grandchildren have been moving back to this special place.



FUTURE

- Improved transportation such as future access point for cross-country trains.
- Approved permits for new luxurious residential and commercial projects.
- Yavneel's parks and roads are constantly being upgraded.

Achuzat Hashvatim

Flagship Project

Of The Yavneel Vacation Village





FAMILY

Imagine having your entire family together for a vacation any time of the year.
No need to worry about hotel reservations, or having space for everyone.
An opportunity to be together for generations to come.

Original Rothschild Shul
In Yavneel



COMMUNITY

A harmonious blend of vacationers and full time residents contribute to the comfortable atmosphere.



JOSH
ADLER

- The Village Project, Efrat
- Dagan on the Park Project
- Hatziporen 2-8, Efrat
- Koresh St, Efrat
- Pitom Haketoret, Efrat
- Villa Bagalil, Yavneel
- Habikah St, Yavneel



GENERAL SPECS

- Location: Private dead-end street (cul de sac)
- Lot size: Approx ½ a dunam of land
- House size: Approx 211 SQM
- House type: Semi-detached 2 level house



EXTERIOR

- Landscaping including garden & paved patio.
- Fencing surrounding the entire property.
 - 2 Private parking spaces
 - Private entrance to the second floor

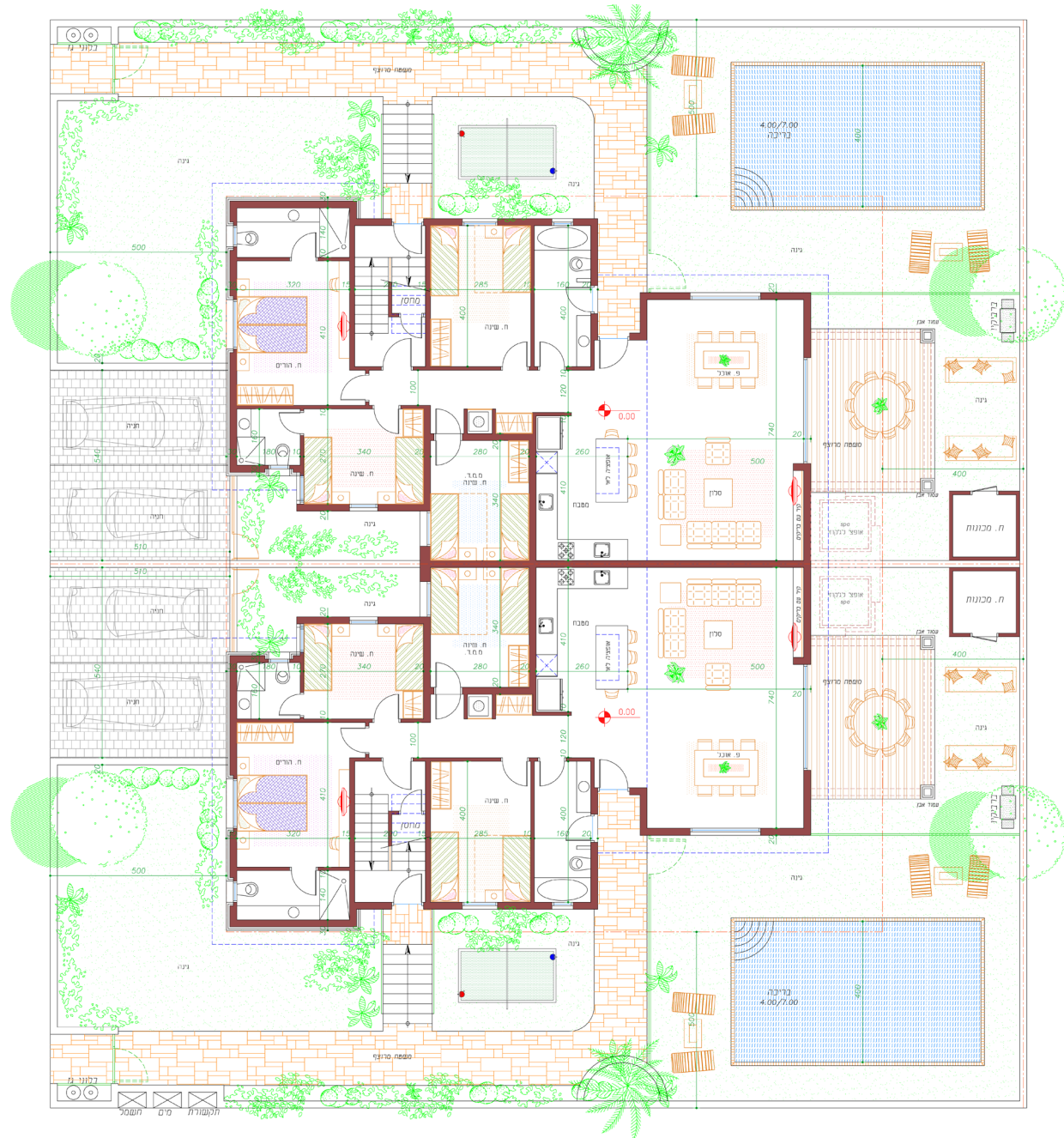


INTERIOR

- Full plywood/Formica kitchen
- Prepped for satellite tv & internet
- Air conditioning/ heating in all rooms

Achuzat Hashvatim, Yavneel

- Location: Private dead-end street
- Lot size: Approx ½ a dunam of land
- House size: Approx 211 SQM
- House type: Semi-detached 2 level house
- Bedrooms: 6
- Bathrooms: 5



Ground Floor

- 1.** In-ground swimming pool
- 2.** Hot tub/Jacuzzi (in rear garden and/or on second floor patio)
- 3.** Shade pergola for 2nd floor roof patio
- 4.** Upgraded landscaping/gardening
- 5.** Property management & maintenance services after house is completed





For More Information & Pricing Contact **Gabai Real Estate**

Yaniv Gabbay

📞 IL: [+972.52.614.1442](tel:+972526141442)

US: +1-551-225-8565

yaniv@gabairealestate.com

www.gabairealestate.com